

PRODUCT KNOWLEDGE

ARMSTRONG INDIA OFFERINGS-PRODUCTS

Steam

Air

Hot
Water

STEAM

1. ISOLATION VALVE
2. PRESSURE REDUCING VALVES & CONTROL VALVE
3. STRAINER
4. FLOW MEASUREMENT
5. AIR VENT
6. MANIFOLDS
7. STEAM TRAPS
8. CLEAN STEAM TRAP & FILTERS
9. HEAT TRANSFER COILS
10. WIRELESS MONITORING
11. CONDENSATE RECOVERY
12. STEAM QUALITY MONITORING

AIR

1. LIQUID DRAINER
2. HUMIDIFICATION
3. PURGER

HOT-WATER

1. WATER TEMPERATURE CONTROL (DRV/ EMECH)
2. DIGITAL- FLO & DIGITAL FLO- HT
3. FLO-DIRECT
4. DIGITAL SEMI STORAGE
5. STEAMIX
6. HEAT PUMP

PRODUCT KNOWLEDGE

ARMSTRONG INDIA OFFERINGS-PRODUCTS

Steam

Air

Hot
Water

ISOLATION VALVES



VALVE TYPE	MOC	SIZE RANGE	ENDS	RATING
BELLOW SEAL VALVE	ASTM A105 & A216 GR WCB	½" to 12"	SCR,SW,BW, FLANGED	150#,300# ,600 & 800#

Bellow seal Valve

Max Allowable Pressure:
51 Bar @ 38 Deg C

Max Allowable Pressure:
136 Bar @ 38 Deg C

Armstrong Piston Valve

VALVE TYPE	MOC	SIZE RANGE	ENDS	RATING
PISTON VALVE	ASTM A105	½" to 1-1/2"	SCR,SW,BW ,FLANGED	800#



PRESSURE REDUCING VALVES

DIRECT ACTING VALVES



GD-30/30S Direct-Acting Pressure Reducing Valves



GD-45 Direct-Acting Pressure Reducing Valves



GD-10/GD-10F/AF-10 Direct-Acting Pressure Reducing Valves



GD-6N (Steam)/GD-6 (Liquid, Gas) Direct-Acting Pressure Reducing Valves



GD-24 Direct-Acting Pressure Reducing Valves



GD-200/200H Direct-Acting Pressure Reducing Valves



GD-2000K Direct-Acting Pressure Reducing Valves

INTERNALLY PILOTED PRESSURE REDUCING VALVES



GP-1000 SERIES

PRESSURE REDUCING VALVES

EXTERNALLY PILOTED DIAPHRAGM-OPERATED PRESSURE REDUCING VALVES



GP-2000 Externally
Piloted Pressure
Reducing Valves



GP-2000L Externally
Piloted Pressure
Reducing Valves



GP-2000CS
Externally Piloted
Pressure Reducing
Valves



GP-2000K-1/GP-
2000K-3/GP-2000K-
6 Externally Piloted
Diaphragm-
Operated Pressure
Reducing Valves



GP-2000R Back
Pressure Valves

PRESSURE REDUCING VALVES

GP-2000 :SIZE RANGE AND MOC



MODEL NAME-GP2000	MOC	SIZE RANGE	END CONNECTION	RATING
Internally Piloted	Ductile iron ASTM A536	½" TO 2 "	Threaded & Flanged	150#
Externally Piloted	Ductile iron ASTM A536	½" TO 2 "	Threaded & Flanged	150#

Max Allowable pressure- 13 bar@195 Deg C
Capacity upto 2000kg/hr

CONTROL VALVE-AIPL



CV1500

MOC	SIZE RANGE	END CONNECTION	RATING
ASTM A216 GR WCB	½" TO 4"	Threaded and Flanged	150# AND 300#

Max Allowable pressure- 35 bar@300 Deg C

Stainless Steel on request

CAST AND FORGED STRAINERS-AIPL



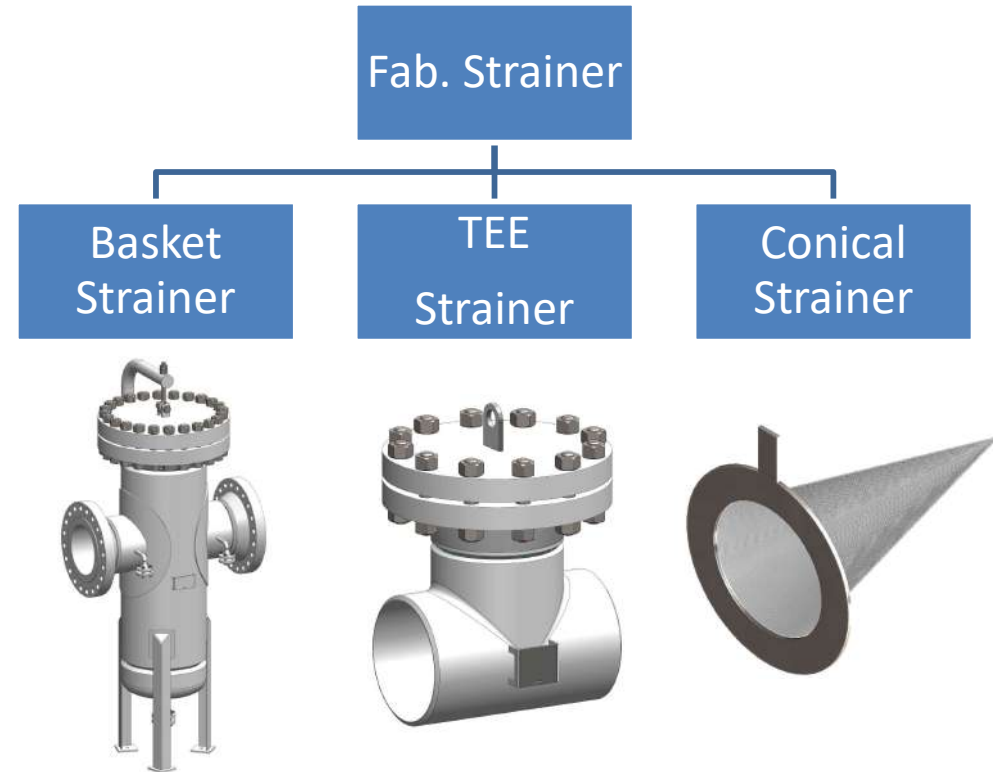
MOC	SIZE RANGE	END CONNECTION	RATING	
ASTM A105	½" TO 1-1/2"	Threaded, SW & (Flanged Fabricated)	300# & 800#	42 bar@ 254 Deg C
ASTM A216 GR WCB	2" TO 12"	Flanged	150# AND 300#	42 bar@ 254 Deg C
ASTM A351 GR CF8M(SS316)	2" TO 12"	Flanged	150# AND 300#	34 bar@ 242 Deg C

600 Rating Flanged strainer upon request from 2" to 12 "

Fabricated Strainer-AIPL

Fabricated Strainer - Features

- Design Code : ASME Sec VIII Div-I / ASME B31.3
- Size : 2" – 24" [50mm – 600mm]- **Not limited**
- Pressure Rating : 150# - 2500#
- Material : CS , SS-304, SS-316, F22 – **Not limited**
- Screen : various mesh size available- **Not limited**



FLOW MEASUREMENT



ACCELABAR

FROM 1" TO 12" UPTO #600
CLASS



VERABAR

ANY SIZE & ANY RATING



Digital Cycle Counter

FLOW MEASUREMENT-AIPL



MOC	SIZE RANGE	END CONNECTION	RATING
ASTM A351 GR CF8M (SS316)	1" TO 12"	Flanged	150# ,300# &600#

- **Maximum operating pressure 45.5 Bars @ 426°C**
- **Capacity- Use VeraCalc for sizing**

AIR VENTS

PLASTIC

Max Allowable Pressure:
10 bar @ 65°C



1-AVC &
1-AVCW

CAST IRON

Max Allowable Pressure:
17 bar @ 232 °C

21-AR



1/2/3/6 -AV
SERIES



Carbon Steel

Max Allowable Pressure:
41 Bar @ 399 Deg C



30-SERIES

2313-HLAR
2315-HLAR
2316-HLAR



TVS-1100
WITH SH300



Stainless Steel

Max Allowable Pressure:
34 Bar @ 360 Deg C



11/22/13-AV

Alloy Steel

Max Allowable Pressure:
207 Bar @ 482 Deg C



2413-HLAR
2415-HLAR
2416-HLAR
25133G-HLAR
25155G-HLAR
26155G-HLAR

AIR VENTS-AIPL



TVS-1100
WITH SH300

MOC	SIZE RANGE	END CONNECTION	RATING
ASTM A105	1/2" TO 3/4"	Threaded , SW & Flanged	150# & 300#

Notes : For Size above 3/4" we need to provide by Expander/Reducer

AIR VENTS-AIPL



MODEL	MOC	SIZE RANGE	END CONNECTION	RATING	ALLOW.PRE SSURE AND TEMP
32-AV	ASTM A105	1/2" TO 3/4"	Threaded , SW & Flanged	150# , 300#,600#	34 BAR@399 DEG C
33-AV	ASTM A105	¾" & 1"	Threaded , SW & Flanged	150# , 300#,600#	
36-AV	ASTM A105	1-1/2" & 2"	Threaded , SW & Flanged	150# , 300#,600#	

Air vent capacity upto approx. (10,725 SCFM)

AIR VENTS-AIPL



MODEL	MOC	SIZE RANGE	END CONNECTION	RATING	ALLOW.PRE SSURE AND TEMP
2313-HLAR	ASTM A105	1/2" TO 1"	Threaded , SW & Flanged	150# , 300#,600#	41 BAR @ 400 DEG C
2315-HLAR	ASTM A105	1 & 1-1/2"	Threaded , SW & Flanged	150# , 300#,600#	
2316-HLAR	ASTM A105	1-1/2" & 2"	Threaded , SW & Flanged	150# , 300#,600#	

Air vent capacity upto approx. (455 SCFM)

STEAM TRAPPING & TRACING EQUIPMENT

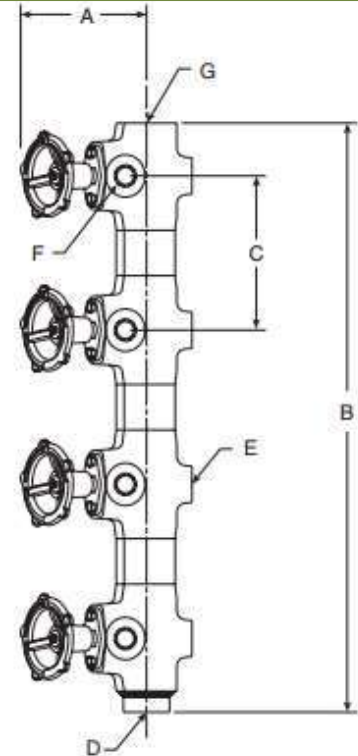


Steam Distribution Manifold (MSD/SMSD)

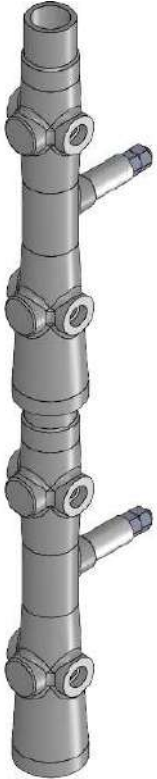
Carbon Steel- ASTM A105N

Model	MSD Series						SMSD Series					
	MSD-04		MSD-08		MSD-12		SMSD-04		SMSD-08		SMSD-12	
	in	mm	in	mm	in	mm	in	mm	in	mm	in	mm
"A" (Open Position)	8	203	8	203	8	203	8	203	8	203	8	203
"B" Height	11-1/2	292	24-1/4	615	37-1/8	943	10-1/4	260	19-3/4	501	29-1/4	743
"C" ϕ to ϕ	6-3/8	162	6-3/8	162	6-3/8	162	4-3/4	120	4-3/4	120	4-3/4	120
"D" Blowdown Connection	3/4 SW	20	3/4 SW	20	3/4 SW	20	3/4 SW	20	3/4 SW	20	3/4 SW	20
"E" Number of Holes for Mounting (M14)	2	2	4	4	6	6	2	2	4	4	6	6
"G" Inlet	1-1/2 SW	40	1-1/2 SW	40	1-1/2 SW	40	1-1/2 SW	40	1-1/2 SW	40	1-1/2 SW	40
"F" Outlet*	1/2	15	1/2	15	1/2	15	1/2	15	1/2	15	1/2	15
Weight, lb (kg)	21 (10)		46 (21)		67 (30)		20 (9)		40 (18)		59 (27)	
Maximum Operating Pressure	464 psi (32 bar) @ 752°F (400°C)											

*3/4" (20 mm) available – contact factory.

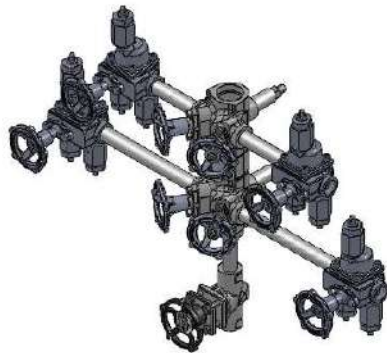


STEAM TRAPPING & TRACING EQUIPMENT



Condensate Collection
Manifold (CCA)

Carbon Steel- ASTM A105N



Steam Trap

**INVERTED BUCKET
TRAP**

FLOAT TRAP

BI-METALLIC TRAP

**THERMOSTATIC
TRAP**



**THERMODYNAMIC
TRAP**

DC TRAP

**TRAP VALVE
STATION**

CONNECTORS

INVERTED BUCKET TRAP

Cast Iron or Ductile Iron

Max Allowable Pressure:
17 Bar @ 232 Deg C



SERIES 200

SERIES 800



SERIES 880

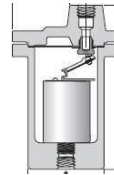
Carbon Steel

Max Allowable Pressure:
69 Bar @ 371 Deg C



SERIES 970

SERIES 300



IB 411G/421

IB 521



Stainless Steel

Max Allowable Pressure:
106 Bar @ 454 Deg C



SERIES 1000

SERIES 1800



SERIES 2000

SERIES 4000



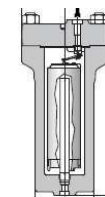
Alloy Steel

Max Allowable Pressure:
241 Bar @ 454 Deg C



SERIES 400

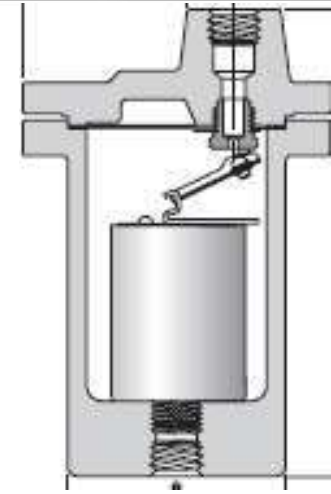
SERIES 5000



SERIES 6000

INVERTED BUCKET TRAP-AIPL

MODEL	MOC	SIZE RANGE	END CONN	RATING	Max .Allowable pressure
IB 310	ASTM A105	½", 3/4"	THD,SW, BW, FLANGED	150#,300#, 600#	41 bar@ 427 Deg C
IB 312	ASTM A105	½",3/4", 1"		150#,300#, 600#	35 bar@ 427 Deg C
IB 313	ASTM A105	½",3/4", 1"		150#,300#	54 bar@ 427 Deg C
IB 314	ASTM A105	1"		150#,300#, 600#	56 bar@ 427 Deg C
IB 315	ASTM A105	1", 1-1/2"		150#,300#, 600#	47.5 bar@ 427 Deg C
IB 316	ASTM A105	1-1/2" – 2"		150#,300#, 600#	52 bar@ 427 Deg C



Capacities upto 9072 kg/hr



INVERTED BUCKET TRAP-AIPL



MODEL	MOC	SIZE RANGE	END CONN	RATING	Max .Allowable pressure
IB 971	ASTM A105	½" to 2"	THD,SW, BW, FLANGED	150#,300#, 600#	41 bar@343Deg C
IB 973	ASTM A216 Gr WCB	½" to 1"	THD,SW, BW, FLANGED	150#,300#, 600#	41 bar@343Deg C

Capacities upto 2000 Kg/Hr

INVERTED BUCKET TRAP-AIPL



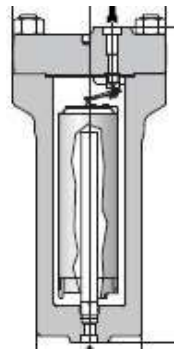
MODEL	MOC	SIZE RANGE	END CONN	RATING	Max .Allowable pressure	Capacities
IB 2011C	ASTM A351 CF8M	With 2 bolt connector	Swivel Flanged	150#,300#	28 bar @427 Deg C	Upto 400 Kg/Hr
IB 2022C	ASTM A351 CF8M	With 2 bolt connector	Swivel Flanged	150#,300#	45 bar @315 Deg c	Upto 590 Kg/Hr

INVERTED BUCKET TRAP-AIPL



IB 4500

MODEL	MOC	SIZE RANGE	END CONN	RATING	Max .Allowable pressure	Capacities
IB 4500	ASTM A351 CF8M	With 4 bolt connector	Swivel Flanged	150#,300#	68.9 barg @ 427°C	Upto 590 Kg/Hr
IB 6155G	ASTM A182 F22	¾" & 1"	SW, BW, FLANGED	150#,300#, 600#,900#, 1500#,2500#	114 bar @538 Deg c	Upto 2948 Kg/Hr



IB 6155G

INVERTED BUCKET TRAP-AIPL

MODEL	MOC	SIZE RANGE	END CONN	RATING	Max .Allowable pressure	Capacities
IB 521	ASTM A105N	With 2 bolt connector	THD,SW, FLANGED	150#,300#, 600#	58 bar @427 Deg C	Upto 590 Kg/Hr
IB 501SH	ASTM A-312 Gr. TP316L	½" and ¾"	SW,BW,FLA NGED	150#,300#, 600#,900#, 1500#,2500#	105 bar @ 454°C	Upto 432 Kg/Hr



INVERTED BUCKET TRAP-AIPL



MODEL	MOC	SIZE RANGE	END CONN	RATING	Max .Allowable pressure
IB 413	ASTM A182 F22	½" ,3/4"	THD,SW, FLANGED	150#,300#, 600#	54 bar@ 482 Deg C
IB 415	ASTM A182 F22	½",3/4", 1"	THD,SW, FLANGED	150#,300#, 600#	66.5 bar@ 482 Deg C
IB 416	ASTM A182 F22	½",3/4", 1"	THD,SW, FLANGED	150#,300#, 600#	68 bar@ 482 Deg C

Capacities upto 9072 kg/hr

FLOAT TRAP

Cast Iron or Ductile Iron

Max Allowable Pressure:
12 Bar @ 191 Deg C



B-BI SERIES

A-AI SERIES



JD/KD SERIES

L/M SERIES



Carbon Steel

Max Allowable Pressure:
40 Bar @ 371 Deg C



ICS SERIES

LS/MS SERIES



Stainless Steel

Max Allowable Pressure:
32 Bar @ 315 Deg C



FT SERIES

FF-4000



FLOAT TRAP-AIPL



ICS SERIES



L/M SERIES

MODEL	MOC	SIZE RANGE	END CONN	RATING	Max .Allowable pressure
ICS F&T	ASTM A105	½" to 1-1/2"	Threaded , SW,	800#	40.0 barg @ 343°C
ICS F&T	ASTM A105	½" to 1-1/2"	Threaded , SW,	800#	40.0 barg @ 343°C
ICS F&T	ASTM A216 Gr WCB	2"	Flanged	150#,300#	40.0 barg @ 260°C
MS F+T	ASTM A216 Gr WCB	2" & 3"	SW, Flanged	150#,300#	17.0 barg @ 232°C

- For ICS F&T Capacities upto 27 215 kg/hr
- For MS F&T Capacities upto 94,348 kg/hr

BI-METALLIC TRAP

Stainless Steel

Max Allowable Pressure: 86 Bar @ 482 Deg C



SH-2000

SH-2500



SH-900



SH-4000



AB-3000

WMT-AB



Alloy Steel

Max Allowable Pressure: 124 Bar @ 565 Deg C



SH-1600



SH-1700

Carbon Steel

Max Allowable Pressure: 40 Bar @ 350 Deg C



SH-300

BI-METALLIC TRAP-AIPL

MODEL	MOC	SIZE RANGE	END CONN	RATING	Max .Allowable pressure	CAPACITIES
SH-300	ASTM A105	½" to 2"	THD,SW, BW, Flanged	150#,300#, 600#	40 bar@350°C	Upto 2,950 kg/hr
SH-1600	ASTM A182 F22	½" to 1"	SW,BW, Flanged	Upto 2500#	120.6 barg @ 520°C	Upto 2,950 kg/hr
SH-1700	ASTM A182 F91	With 2 bolt connector	Swivel Flanged	Upto 2500#	137.2 barg @ 540°C	Upto 3,180 kg/hr
SH-2500	ASTM A351 CF8M	With 2 & 4 bolt connector	Swivel Flanged	600#	28 bar@427°C	Upto 2,175 kg/hr
SH-4500	ASTM A351 CF8M(SS316)	With 2 & 4 bolt connector	Swivel Flanged	600#	86 bar@482°C	Upto 2,722 kg/hr



THERMOSTATIC TRAP

Stainless Steel

Max Allowable Pressure: 41 Bar @ 399 Deg C



TT-SERIES

WT-SERIES



WMT-SERIES

Carbon Steel

Max Allowable Pressure: 40 Bar @ 350 Deg C



TC-300

THERMODYNAMIC TRAP

Stainless Steel

Max Allowable Pressure: 63 Bar @
400 Deg C



CD-3300S



CD-3300

Carbon Steel

Max Allowable Pressure: 69.6
barg @ 399°C)



CD-72SR

Alloy Steel

Max Allowable Pressure: 103.4 Bar
@ 343 Deg C



CD-80S

THERMO-DYNAMIC TRAP-AIPL



MODEL	MOC	SIZE RANGE	END CONN	RATING	Max .Allowable pressure	CAPACITIES
CD-72SR	ASTM A105	½" ,3/4"	THD,SW, BW, Flanged	150#,300#, 600#	69.6 barg @ 399°C	Upto 435 KG/HR
CD-80S & 82S	ASTM A182 F11 &F22	½" ,3/4"	THD,SW, BW, Flanged	Upto 900#	103.4 barg @ 343°C	Upto 362 KG/HR
CD-3300	ASTM A276 Gr. 420	With 2 bolt connector	Swivel Flanged	600#	50 bar @ 400°C	Upto 363 KG/HR

AUTOMATIC DIFFERENTIAL CONDENSATE CONTROLLERS

Cast Iron

Max Allowable Pressure: 17 Bar @ 232 Deg C



20-DC SERIES

80-DC SERIES



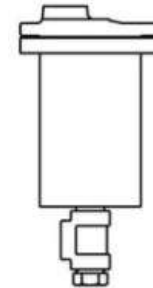
JD/KD SERIES

L/M SERIES



Carbon Steel

Max Allowable Pressure: 76 Bar @ 343 Deg C



30-DC SERIES

LS/MS SERIES



TRAP VALVE STATION

Cast Iron

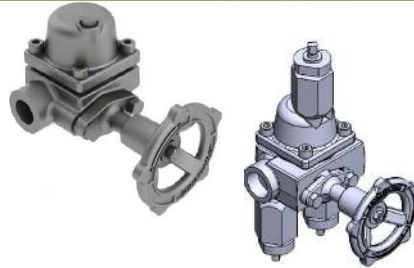
Max Allowable Pressure:
17 Bar @ 232 Deg C



TVS-800 SERIES

Carbon Steel

Max Allowable Pressure:
45 Bar @ 351 Deg C



TVS-1100 SERIES

TVS-5000 SERIES



Stainless Steel

Max Allowable Pressure:
45 Bar @ 315 Deg C



TVS-4000



TVS-4000F

TRAP VALVE STATION-AIPL



MODEL	MOC	SIZE RANGE	END CONNECTION	RATING	Max .Allowable pressure
TVS1100 & TVS1200	ASTM A105N	1/2" TO 3/4"	Threaded , SW & Flanged	150#, 300# &600#	51.0 barg @ 38° C
TVS 5000	ASTM A105N	1/2" TO 3/4"	Threaded , SW & Flanged	150#,300#&600#	45 barg @ 315° C
TVS 4000	ASTM A351 CF8M(SS316)	1/2" TO 3/4"	Threaded , SW & Flanged	150#,300#&600#	45 bar @ 315°C

Notes : For Size above 3/4" we need to provide by Expander/Reducer

CONNECTORS

Stainless Steel

Max Allowable Pressure: 85.8 Bar @ 482 Deg C
Sizes 1/2" and 3/4"



IS-4



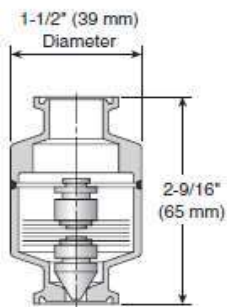
IS-2



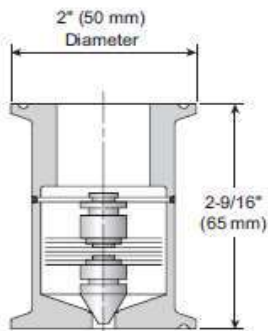
STANDARD
CONNECTOR

CLEAN STEAM TRAP & FILTER

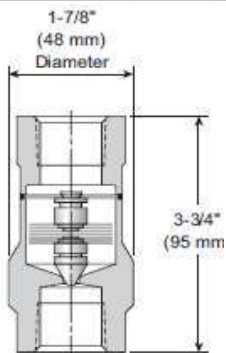
Max Allowable Pressure: 10 Bar @ 186 Deg C



Model TC-S Sealed
1/2" (15 mm), 3/4" (20 mm)
Sanitary End Connections



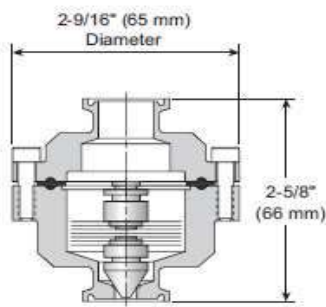
Model TC-S Sealed
1" (25 mm)
Sanitary End Connections



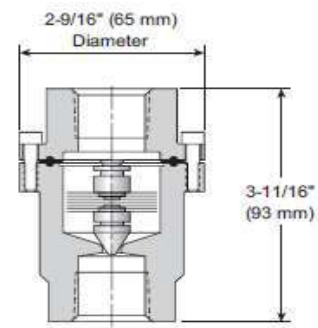
Model TC-S Sealed
1/2" (15 mm), 3/4" (20 mm)
Threaded End Connections



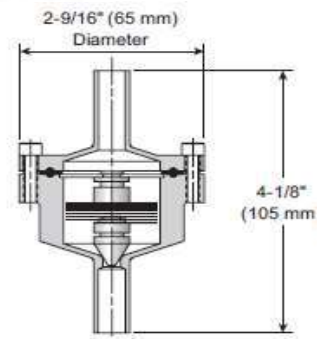
**CLEAN STEAM
FILTER**



Model TC-R Repairable
With Bolted Body and Cap
1/2" (15 mm), 3/4" (20 mm), 1" (25 mm)
Sanitary End Connections



Model TC-R Repairable
With Bolted Body and Cap
1/2" (15 mm), 3/4" (20 mm)
Threaded End Connections



Model TC-R Repairable
With Bolted Body and Cap
1/2" (15 mm), 3/4" (20 mm)
Tube End Connections

HEAT TRANSFER COILS



HEAVY DUTY COILS -
SERIES 6000



UNIT AND DOOR
HEATERS



PLATE FIN COILS -
DURALITE



DURAMIX™ FACE AND BY-PASS
HEATING COILS



TANK HEATERS

WIRELESS MONITORING



THE FUTURE OF STEAM AND
HOT WATER SYSTEM
MANAGEMENT IS HERE.

SAGE® RAISES UTILITY SYSTEM MANAGEMENT TO A GROUNDBREAKING NEW LEVEL BY
ENABLING YOU TO MAXIMIZE EQUIPMENT RELIABILITY, EFFICIENCY AND SAFETY.

CONDENSATE RECOVERY EQUIPMENT

STEAM/AIR OPERATED PUMPS & PUMP TRAPS

Cast Iron or Ductile Iron

Max Allowable Pressure: 10 Bar
@ 232 Deg C



PT-104
SERIES



PT-200
SERIES



DD-4

Carbon Steel

Max Allowable Pressure: 14 Bar @ 204 Deg C



PT-300
SERIES



PT-400
SERIES



PT-516



DD-6



DD-12

CONDENSATE RECOVERY EQUIPMENT-AIPL



MODEL	BODY MOC	SIZE RANGE (IN X OUT)	END CONNECTION	RATING	CAPACITIES (COLD WATER)
PT-404	ASTM A516 GR 70	1" X 1"	Flanged	150#, 300#	1451 KG/HR
PT-406	ASTM A516 GR 70	1-1/2" X 1-1/2"	Flanged	150#,300	2222 KG/HR
PT-408	ASTM A516 GR 70	2" x 2"	Flanged	150#,300#	3084 KG/HR
PT-412	ASTM A516 GR 70	3" X 2"	Flanged	150#,300#	5080 KG/HR

CONDENSATE RECOVERY EQUIPMENT-AIPL

MODEL	BODY MOC	SIZE RANGE (IN X OUT)	END CONNECTION	RATING	CAPACITIES (COLD WATER)
PT-308	ASTM A516 GR 70	2" X 2"	Flanged	150#, 300#	5125 KG/HR
PT-312	ASTM A516 GR 70	3" X 2"	Flanged	150#,300	6849 KG/HR



CONDENSATE RECOVERY EQUIPMENT-AIPL

MODEL	BODY MOC	SIZE RANGE (IN X OUT)	END CONNECTION	RATING	CAPACITIES (COLD WATER)
PT-516	ASTM A516 GR 70	4" X 4"	Flanged	150#,300	28,582 KG/HR



CONDENSATE RECOVERY EQUIPMENT-AIPL



MODEL	BODY MOC	SIZE RANGE (IN X OUT)	END CONNECTION	RATING	PUMP CAPACITIES (COLD WATER)	PUMP CAPACITIES (COLD WATER)
DD-6	ASTM A516 GR 70	1-1/2" x 1"	Flanged	150#,300#	1588 KG/HR	10206 KG/HR
DD-12	ASTM A516 GR 70	3" X 3"	Flanged	150#,300#	7847 KG/HR	27304 KG/HR



CONDENSATE ACCESSORIES



VERTICAL FLASH TANK

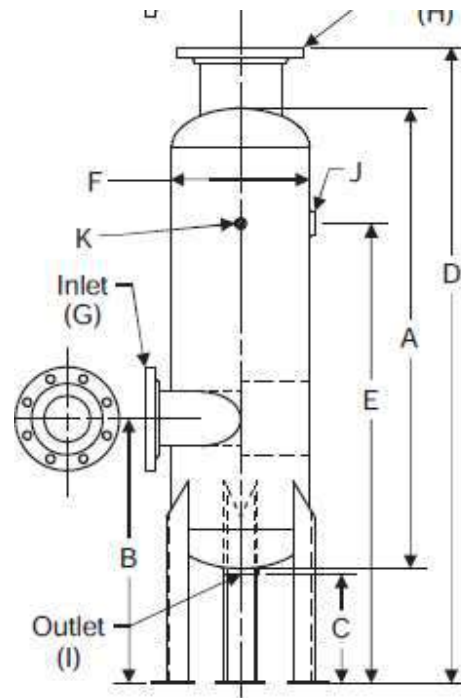


HORIZONTAL FLASH TANK



EXHAUST HEAD

CONDENSATE ACCESSORIES



Physical Data—Standard Design Model VAFT

Model No.	AFT-6		AFT-8		AFT-12		AFT-16	
	in	mm	in	mm	in	mm	in	mm
A	36	914	36	914	40	1,016	48	1,219
B	21	533	21	533	23	584	26	660
C	9-1/2	241	9-1/2	241	9-1/2	241	9-1/2	241
D	51	1,295	52	1,321	55-3/8	1,407	63-1/2	1,613
E	36	914	36	914	40	1,016	48	1,219
F	6	150	8	203	12	305	16	406
G	2	50	3	80	4	102	6	150
H	2-1/2	65	4	102	6	150	6	150
I	1-1/2	40	1-1/2	40	2	50	2	50
J	3/4	20	1	25	1-1/2	40	2	50
K	1/2	15	1/2	15	1/2	15	1/2	15

NOTE: Connections "G" and "H" are 150 lb. flanges. All others are NPT. All flash tanks are ASME coded for 150 psig (10 bar). Special sizes available upon request.

Capacities—Standard Design Model VAFT

Model No.	Maximum Condensate Load		Maximum Flash Load	
	lb/hr	kg/hr	lb/hr	kg/hr
AFT-6	2,000	907	500	227
AFT-8	5,000	2,268	1,000	454
AFT-12	10,000	4,536	2,000	907
AFT-16	20,000	9,072	3,000	1,361

STEAM QUALITY MONITORING TRAP

QM-1

For Industrial and Culinary steam, measures and communicates the dryness fraction to improve efficiency and increase safety.



QM-3

For clean and pure steam in the biopharmaceutical industry to meet EN 285 protocols, measures and communicates the dryness fraction, the amount of NCG, and the superheat status.



PRODUCT KNOWLEDGE

ARMSTRONG INDIA OFFERINGS-PRODUCTS

Steam

Air

Hot
Water

LIQUID DRAINER

PLASTIC

Max Allowable Pressure:
10 bar @ 65°C



1-LDC &
1-LDCW

CAST IRON

Max Allowable Pressure:
17 bar @ 232 °C

21-LD



1/2/3/6 -LD
SERIES



Carbon Steel

Max Allowable Pressure:
41 Bar @ 399 Deg C



32/33/36 LD

2313-HLS
2315-HLS
2316-HLS



SERIES 980



Stainless Steel

Max Allowable Pressure:
34 Bar @ 360 Deg C



11/22/13-LD

180-LD



995LD-DSS
SERIES



Alloy Steel

Max Allowable Pressure:
207 Bar @ 482 Deg C



2413-HLS
2415-HLS
2416-HLS
25133G-HLS
25155G-HLS
26155G-HLS

LIQUID DRAINER -AIPL



MODEL	MOC	SIZE RANGE	END CONNECTION	RATING	ALLOW.PRES SURE AND TEMP
32-LD	ASTM A105	1/2" TO 3/4"	Threaded , SW & Flanged	150# , 300#,600#	34 BAR@399 DEG C
33-LD	ASTM A105	3/4" & 1"	Threaded , SW & Flanged	150# , 300#,600#	41 BAR @ 399 DEG C
36-LD	ASTM A105	1-1/2" & 2"	Threaded , SW & Flanged	150# , 300#,600#	

For Loads upto 19,050 kg/hr

LIQUID DRAINER -AIPL



MODEL	MOC	SIZE RANGE	END CONNECTION	RATING	ALLOW.PRES SURE AND TEMP
2313-HLS	ASTM A105	1/2" TO 1"	Threaded , SW & Flanged	150# , 300#,600#	41 BAR @ 400 DEG C
2315-HLS	ASTM A105	1 & 1-1/2"	Threaded , SW & Flanged	150# , 300#,600#	
2316-HLS	ASTM A105	1-1/2" & 2"	Threaded , SW & Flanged	150# , 300#,600#	

Air vent capacity upto approx. (600 Kg/Hr)

HUMIDIFICATION

CONDITIONED STEAM

SERIES 9000

SERIES 1000

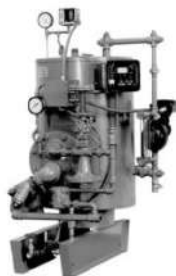
SM STEAM
SHOWERS

SERIES ACV

UNFIRED

HUMIDIPACK
FAMILY

SERIES CS



ELECTRIC STEAM HUMIDIFIERS

SERIES EHU-
800 -
ELECTRODE



GAS FIRED STEAM HUMIDIFIERS

SERIES GFH



EVAPACK SERIES



PURGERS



XR-1500 Series

Primarily used for hazardous gases or locations where electricity is not an option.



XR-1501 Series

Primarily used on packaged refrigeration systems or systems that only have one or two purge points.

XR-1503 Series

Used in systems with as few as one purge point and as many as 34 purge points. This system has total automatic operation.

PRODUCT KNOWLEDGE

What we Manufacture & What we Import!



HOT WATER



Flo-H2O®



Digital-Flo HT®



Digital-Flo®

HOT WATER



HEAT PUMP



DIGITAL SEMI
STORAGE
SYSTEM (DSS)



EMECH



DRV

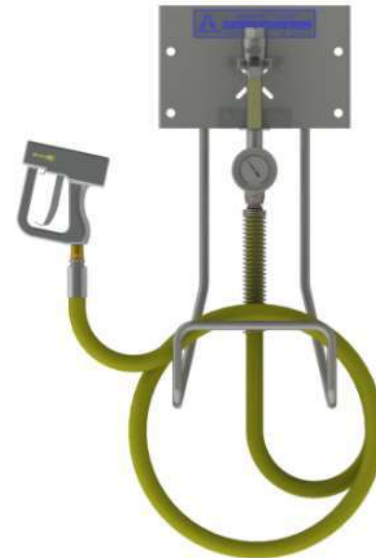
STEAMIX



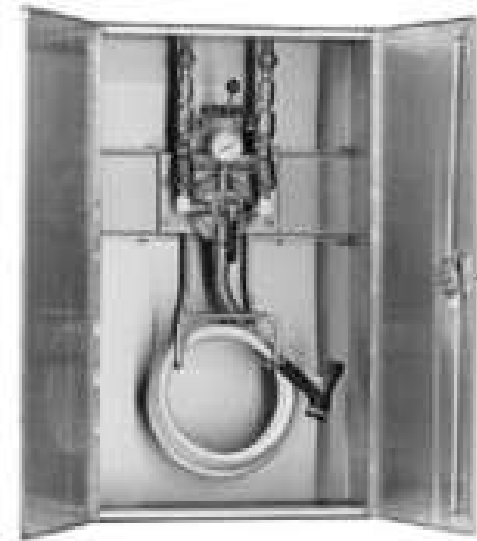
BRASS HOSE STATION



STAINLESS STEEL HOSE STATION



SINGLE TEMPERATURE HOSE STATION



HOSE STATION WITH CABINET

MISCELLANEOUS PRODUCTS (BOUGHT OUT)



MOISTURE SEPERATOR
MAHAVAS PRECISION CONTROLS
PVT. LTD.



CHECK VALVE
EXPERT ENGINEERING
ENTERPRISES

HEAT EXCHANGER



ALFA LAVAL
HRS INDIA
SONDEX
GEA
TRANTER



SAFETY VALVE
Darling Muesco (I) Pvt. Ltd.



SS STRAINER
ACME Fluid System
SUNGOV Engineering



**GATE, GLOBE, BUTTERFLY
VALVE**

L&T Valves
Avcon Controls Pvt. Ltd.





Armstrong provides intelligent system solutions that improve utility performance, lower energy consumption, and reduce environmental emissions while providing an enjoyable experience.

North America • Latin America • India • Europe
Middle East • Africa • China • Pacific Rim

ARMSTRONGINTERNATIONAL.COM